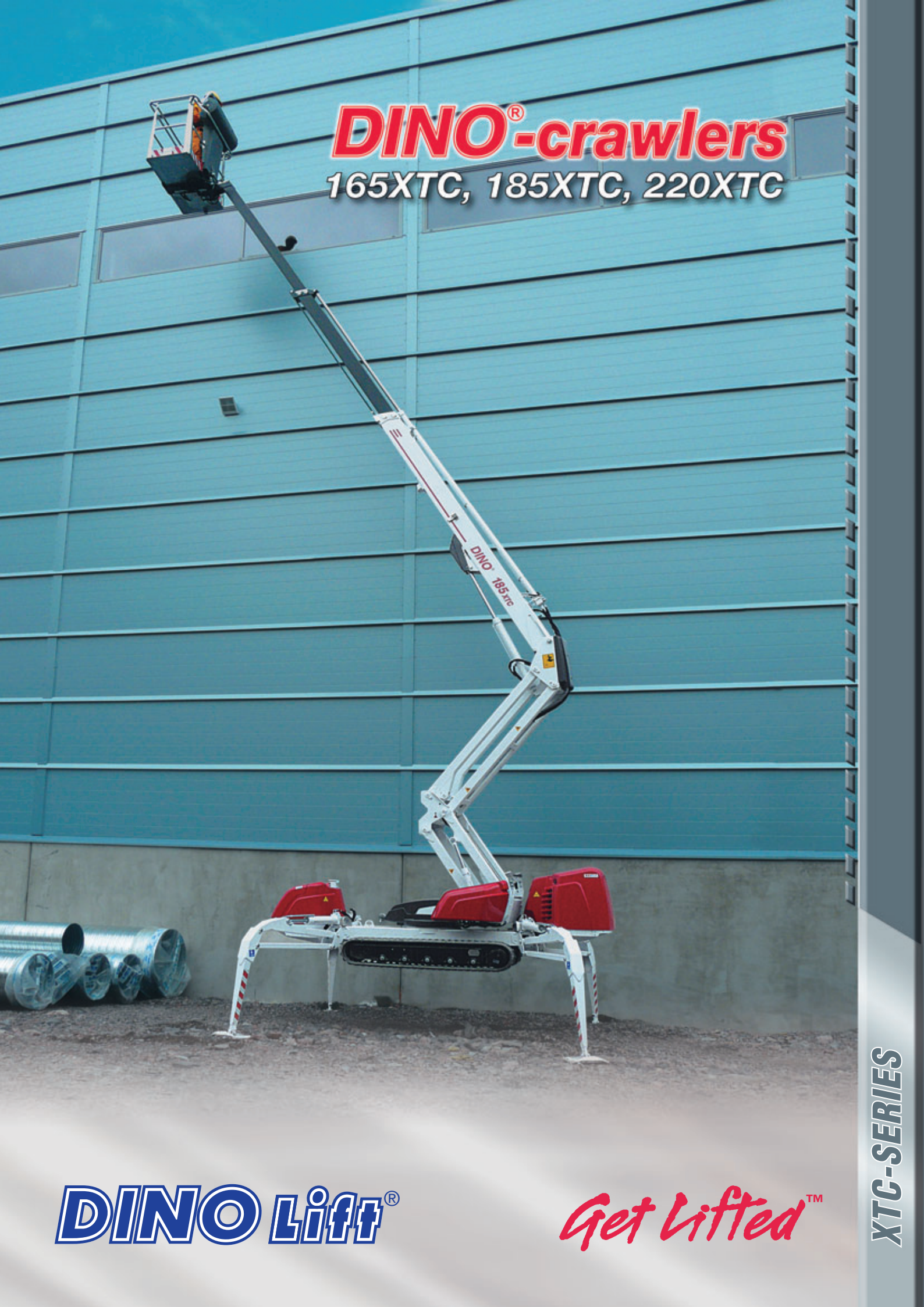


DINO[®]-crawlers

165XTC, 185XTC, 220XTC



DINO Lift[®]

Get Lifted[™]

XTC-SERIES



Compact and narrow, 1.15 m, without removing the basket.



User-friendly radio control.



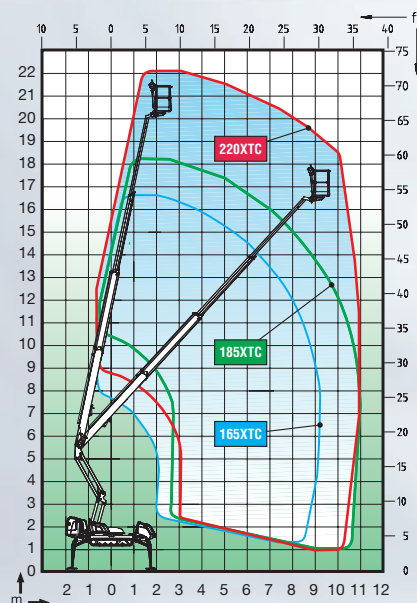
Excellent gradeability 43 %.



Levelling to the max. inclination 16°.

	165XTC	185XTC	220XTC
Max. working height	16.5 m	18.5 m	22,1 m
Max. platform height	14.5 m	16.5 m	20,1 m
Max. outreach	9.1 m	10.9 m	11.0 m
Support width	3.46 m	3.46 m	3.46 m
Lifting capacity	215 kg	215 kg	215 kg
Basket size	0.7 x 1.3 m	0.7 x 1.3 m	0.7 x 1.3 m
Boom rotation	continuous	continuous	continuous
Basket rotation	90°	90°	90°
Transport length	5.26 m	5.85 m	6.29 m
Transport width	1.15 m	1.15 m	1.15 m
Transport height	1.98 m	1.98 m	1.98 m
Weight	2900 kg	3000 kg	3240 kg
Diesel engine	18.7 kW / 25 hp	18.7 kW / 25 hp	18.7 kW / 25 hp
Length of tracks	1.93 m	1.93 m	1.93 m
Gradeability	43%	43 %	43 %
Max. levelling inclination	16°	16°	16°
Drive speed	1.4 / 2.4 km/h	1.4 / 2.4 km/h	1.4 / 2.4 km/h
Radio control	option	option	option

The specifications are subject to change without notice.



Crawler-mounted DINO XTC-models are designed for the most demanding outdoor and indoor work targets.

Narrow support width with fast and easy outriggers combined with a powerful engine and excellent driving properties even in softest and inclined grounds enable efficient and versatile use of the crawler. The work target is reached extremely fast with maximum movement speeds (EN280) and unique XT-boom.

For indoor use, DINO XTC can be equipped with an electric motor and white tracks.

DINO Lift®

Dinolift Oy • Raikkolantie 145 Tel +358-2-76 25 900
 FI-32210 Loimaa • Finland Fax +358-2-76 27 160
 Internet www.dinolift.com