

Meet

DINO 220XTC II

SPIDER DINO®



Standard features in DINO 220XTC II:

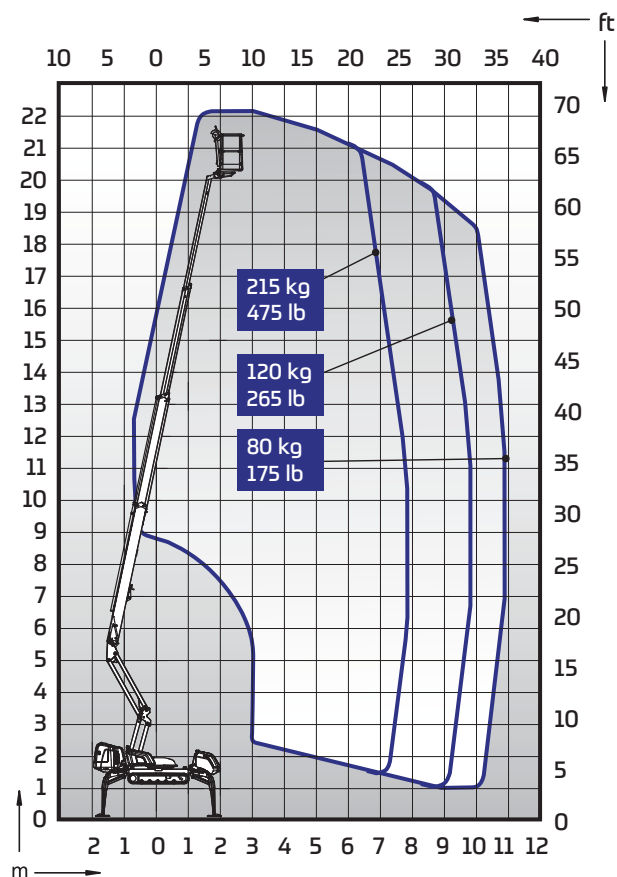
- Compact and narrow; width 1.4 m / 1.18 m
- Extremely stable to drive – long tracks; low ground pressure – low center of gravity
- Strong diesel engine, excellent gradeability 43 %
- Levelling to the max. inclination 16°
- Hydraulic basket rotation 180°
- Easy-entry basket
- Continuous rotation of the boom
- AC sockets in the basket

Options available for DINO 220XTC II:

- User-friendly radio control
- Automatic levelling
- Electro motor 230V
- Non-marking tracks
- DINO SafeGuard secondary guarding
- Special colour
- Converter 110V
- Narrow basket 0.70 x 0.80 m
- LED working lights

Technical data

	Metric	Imperial
Max. working height	22.10 m	72 ft 6 in
Max. platform height	20.10 m	65 ft 11 in
Max. outreach	11.00 m	36 ft 1 in
Support width	3.54 / 3.95 m	11 ft 7 in / 12 ft 12 in
Lifting capacity	215 kg	475 lb
Basket size	0.7 x 1.3 m	2 ft 4 in x 4 ft 3 in
Boom rotation	cont.	cont.
Basket rotation	180°	180°
Boom control	proport.	proport.
Transport length	6.30 m	20 ft 8 in
Transport width	1.40 / 1.18 m	4 ft 7 in / 3 ft 10 in
Transport height	1.98 m	6 ft 6 in
Weight	3060 kg	6745 lb
AC socket in the basket x 2	std	std
Diesel engine Kubota 17.3 kW	std	std
Length of tracks	1.93 m	6 ft 4 in
Gradeability	43 %	43 %
Max. levelling inclination	16°	16°
Drive speed	1.4 / 2.4 km / h	0.9 / 1.5 mph
Radio control	option	option
Automatic levelling	option	option
Electro motor	option	option



DINOLIFT

Ukraine

ООО «Техноподъем» | 61017, Украина, Харьковская область, Харьков,
Офис/Склад: ул.Красномаяцкая,16

Тел.: +38 050 300-88-81 | +38 067 673-88-81
E-mail: Sart@technopodjem.com.ua

Подробнее: Dinolift.com.ua